

Conventional method

General stamping
+ Collar press fit

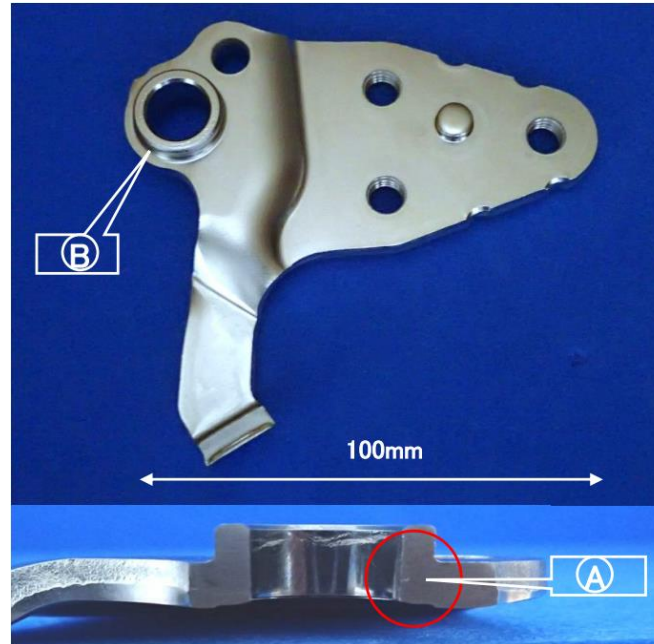
Customer challenges

- Cost saving
- Maximize production
- Maximize quality



Cold forging progressive stamping using coiled material

Achieved **18%** cost reduction, maintained **80%** Shear plane rate for the Cylinder shape parts and less than **0.05mm** hole diameter tolerance !



KIYA's Technology / Advantages

- Change in conversion process has **reduced cost by 18%** and increase in production level.
- **(A) 80% Shear plane rate** for the Cylinder shape parts, **Shear face roughness is below Ra1.0μm.**
- **(B) Secured below 0.05mm tolerance on hole diameter.**

Component information

Material: SPH270C
 Thickness: t6.0mm
 Purpose: Slide door parts
 Process / Number of cavities: Progressive processing / R · L Set cavities