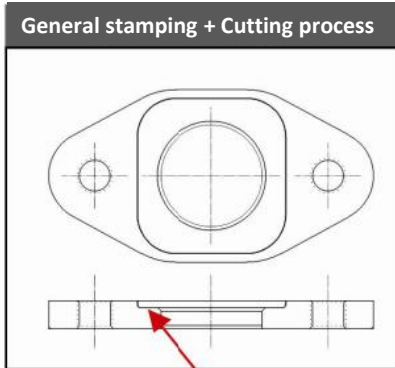


20% cost reduction, Actualized irregular crush mold shape

Conventional product



Cutting process on the step of irregular shape

Customer challenges

- Low production
- High cost
- Cutting Burr



[KIYA'S NEW Method]

Solved issues by changing to Cold Forging Progressive method!



Irregular crush molding



Irregular crush molding

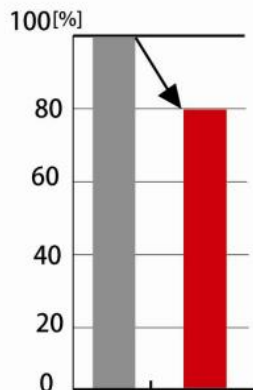
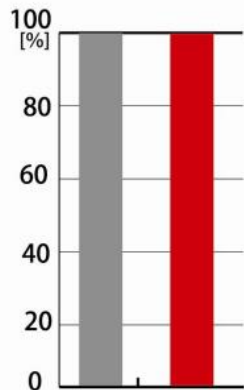
Material: SPHC  
Thickness: t8.0mm

Utilizing CAE analysis

Using High rigidity · High precision stamping

Identical function

20% Cost reduction



Conventional KIYA's process      Conventional KIYA's process

Customer Benefits !

- Changing to KIYA's Cold Forging Progressive die method conversion from the traditional cutting process has **achieved 20% cost reductions! Increase in productivity!**
- **Irregular crush mold shape** made possible by Introducing KIYA's new manufacturing method.
- Even using the thin wall, components **are in net shape.**